

Spam

Big Rig Media uses state of the art technology to protect its clients from Spam. We utilize RBI's, daily spam definition updates and more.

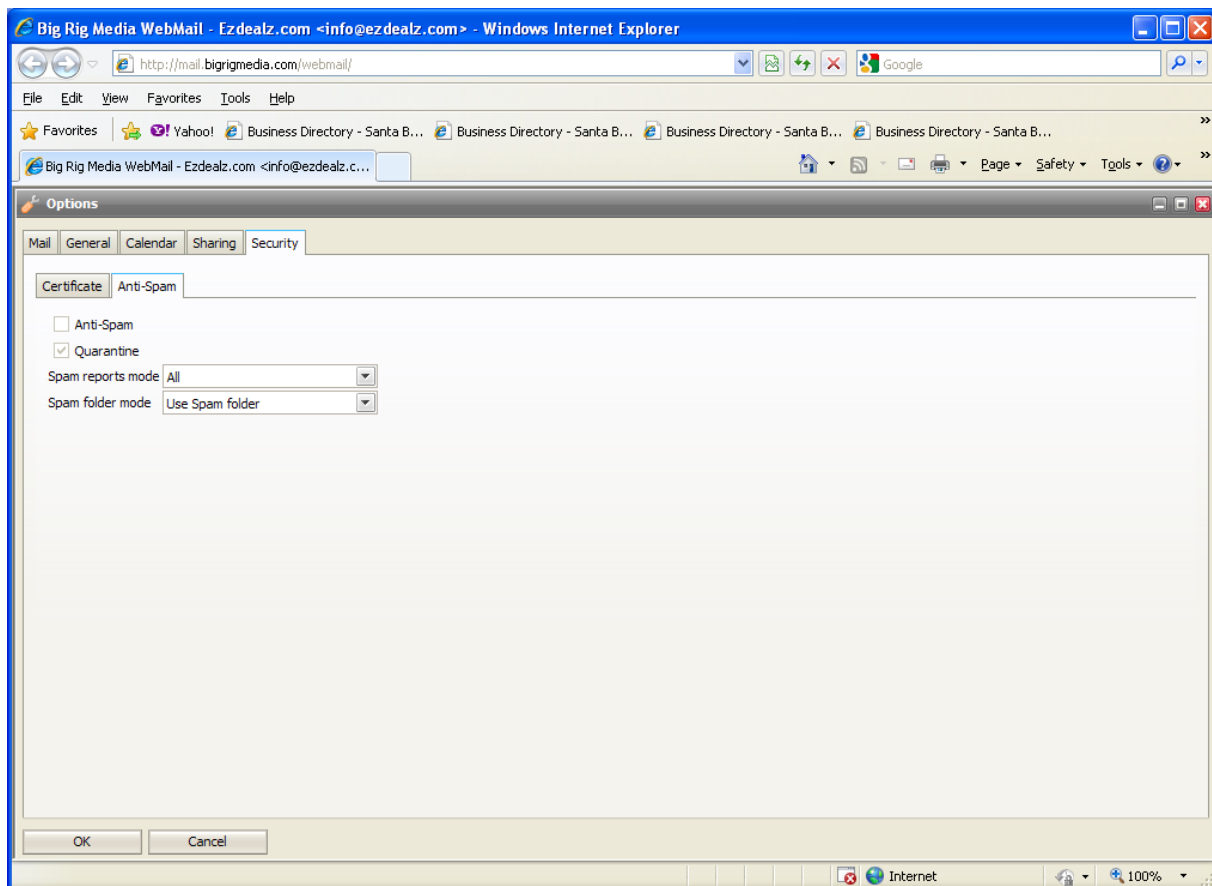
By default all Big Rig Media clients have their Spam folder enabled. Users receive reports daily at 6am with a detailed listing of what's in their spam folder.

ALL SPAM SETTINGS are controlled within Big Rig Webmail. To make setting changes users must log into <http://mail.bigrigmedia.com/>

Disabling Spam:

Select Tools in the menu bar > Options > Security in the top main tabs.

Select Anti-Spam and un-check the box then select OK at the lower left.



Anti-Spam: Check this box if you want your incoming messages to be processed with IceWarp Anti Spam engine.

NOTE - that this option is only available and may only be changed if your administrator has allowed it.

Quarantine: Check this box if you want your incoming messages to go through the Quarantine process.

NOTE - that this option is only available and may only be changed if your administrator has allowed it.

Spam reports Mode: The Spam Report is a daily email containing a list of Spam and/or Quarantined items that have come in to your mail queue. Choose the format and content of your Spam Report.

- Disabled - Turn off Spam reports for your account.
- Default - Accept the default Spam report set by your administrator.
- All - Have all Spam and Quarantined items listed in your Spam report.
- New Items - Have only new Items listed in your Spam Report.

Spam Folder Mode: You can choose to have all Spam messages delivered to a separate folder. By default this folder is called Spam, but may have been mapped to another folder name via Folder Mapping. Select one of the three options from the dropdown:

- Default - Go with the default option set by your system administrator.

White and Blacklist

- A "white list" is used to insure that certain emails won't be filtered out.
- A "black list" is used to insure that certain emails are definitely marked as spam.
- To white list or Black list an email simply right click your mouse and choose.
- These sub-folders reside in your Filters folder. Users can also manage the black and white list filters on the left hand side of the Web Mail window in addition to adding valid emails.

